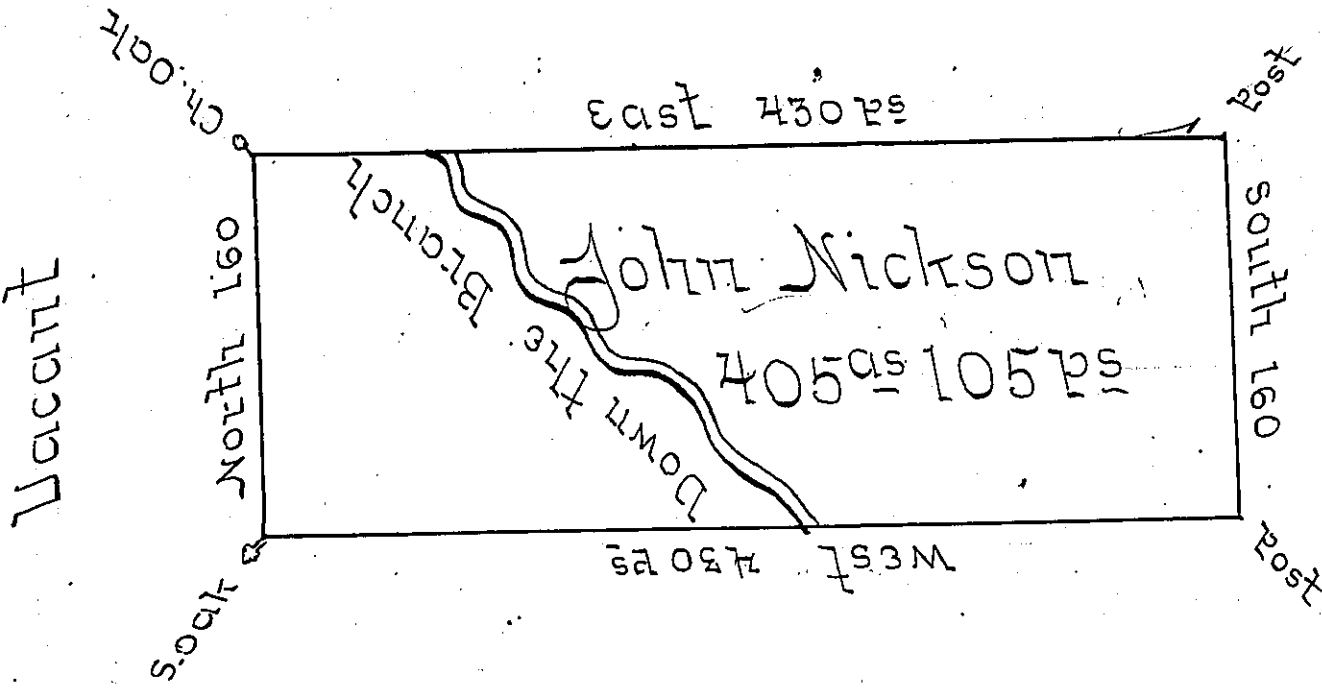


John Fry



John Burn

Situated on the Waters of Two lick Creek in Wheatfield Township, Westmoreland County, Containing 405 acres and 105 perches & Allowance of six per Cent for Roads & ~~was~~ surveyed for John Nickson the 19th Day of Nov^r 1794 on Warrant Dated 3^d Day of May 1793.

James Ross U.S.

Daniel Broadhead Esq. S.S.

IN TESTIMONY that the above is a copy of the original remaining on file in the Department of Internal Affairs of Pennsylvania, made conformably to an Act of Assembly approved the 16th day of February, 1833, I have hereunto set my Hand and caused the Seal of said Department to be affixed at Harrisburg, this fourth day of February 1902.

James Ross
Secretary of Internal Affairs.